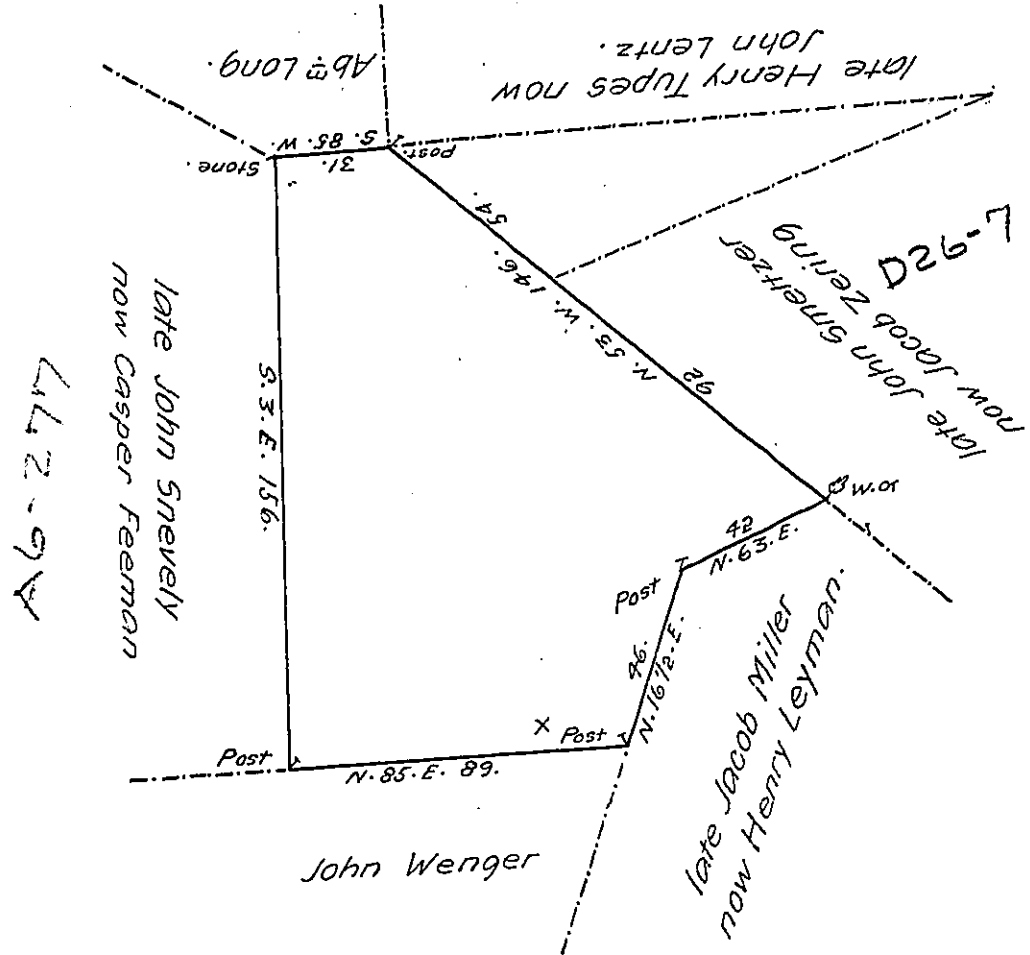


FORM No. 1.



By Virtue of Two Proprietary Warrants Granted to Stephen Wenger the one is dated the 3<sup>d</sup> day of October 1750. the other is dated the 24<sup>th</sup> day of October 1751.

There hath been Surveyed the 4<sup>th</sup> day of November 1753 by John Scull (then Deputy Surveyor) for the s<sup>d</sup> Stephen Wenger as appears by his Draught return'd into the Surveyor General's Office. And now at the request of John Wenger and by virtue of the said two Warrants I have resurveyed the said above Described Tract of Land Situate in Bethel Township in the County of Dauphin According to the Original land Marks Containing Ninety seven Acres and One hundred and six perches and the allowance of Six per Cent for Roads &c.

Note. The triangler piece doded off on the Northeast side hath been Originally included in the Survey made for the said Stephen Wenger, and afterwards taken in a Survey made for Henry Zering on his warrant dated the 4<sup>th</sup> November 1772. and Granted by Patent to the s<sup>d</sup> Henry Zering the 12<sup>th</sup> day of June 1773.

Andrew Porter Esq.  
Surveyor General.

John McKee D.S.

IN TESTIMONY that the above is a copy of the original remaining on file in the Department of Internal Affairs of Pennsylvania, made comformably to an Act of Assembly approved the 16th day of February 1833, I have hereunto set my hand and caused the Seal of said Department to be affixed at Harrisburg, this first day of May 1907.

*Isaac R. Brown*  
Secretary of Internal Affairs.